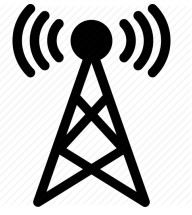


Press Gang Metropol

Technical Rider



Contact :

pressgangmetropol@gmail.com

Sound System :

The Promoter should provide high quality, multi way active PA. (L-Acoustics, Meyer Sound, D&B, JBL Vertex, Nexo, Adamson...). No home made or low quality PA.

The PA should fit the venue size and produce the same dB pressure everywhere in the audience.

The mixing desk MUST be located between both sound systems and 2/3 the way to the back of the venue.

FOH :

1 x Digital Mixing Desk : Yamaha CL3/5, PM5D-RH, Midas Pro, Digidesign, Digico...

Monitors :

1 x Digital Mixing Desk : Yamaha CL3/5, PM5D-RH, Midas Pro, Digidesign, Digico...

6 x Floor Monitors (UM1, 115HiQ, 12XT, PS10...)

2 x Side Fills (ARCS, JM1P, MSL4...) + 2 Sub/Low

Backline :

Drumkit :

1 Bass Drum 22"x18" (Remo or Evans Drumhead. Muffler included)

3 toms 10"/12"/16" (Remo or Evans Drumheads)

1 Snare 14"x6,5" with stand (Remo or Evans Drumhead)

1 14" Hi-Hat with stand (Sabian or Zildjian)

3 Cymbal Stands

1 16" Thin Crash (Sabian or Zildjian)

1 16" Heavy Crash (Sabian or Zildjian)

1 20" Ride (Sabian or Zildjian)

1 Tama Iron Cobra Drum Pedal

1 Carpet 2mx2m

We will provide Cymbals, Snare Drum, and Drumpedal depending the venue and the possibility to take them. Do not hesitate to contact us.

Bass

1 x Mark Bass Head with 4x10" cabinet (Hartke, Mark Bass, Ampeg...)

NO 1x15" Cabinet !

Guitar

2 x guitar combos : (vox ac15/30, Roland JC-120, Fender Twin, Marshall DSL40, Blackstar...)

Keyboards :

2 RTX Keyboard stands

1 Computer stand (a tipped flight case can make it)

Local Crew :

The Promoter will provide the following LOCAL crew :

One Production Manager

One P.A. Engineer

One Monitor Engineer. Please note that we are travelling without Monitor's engineer

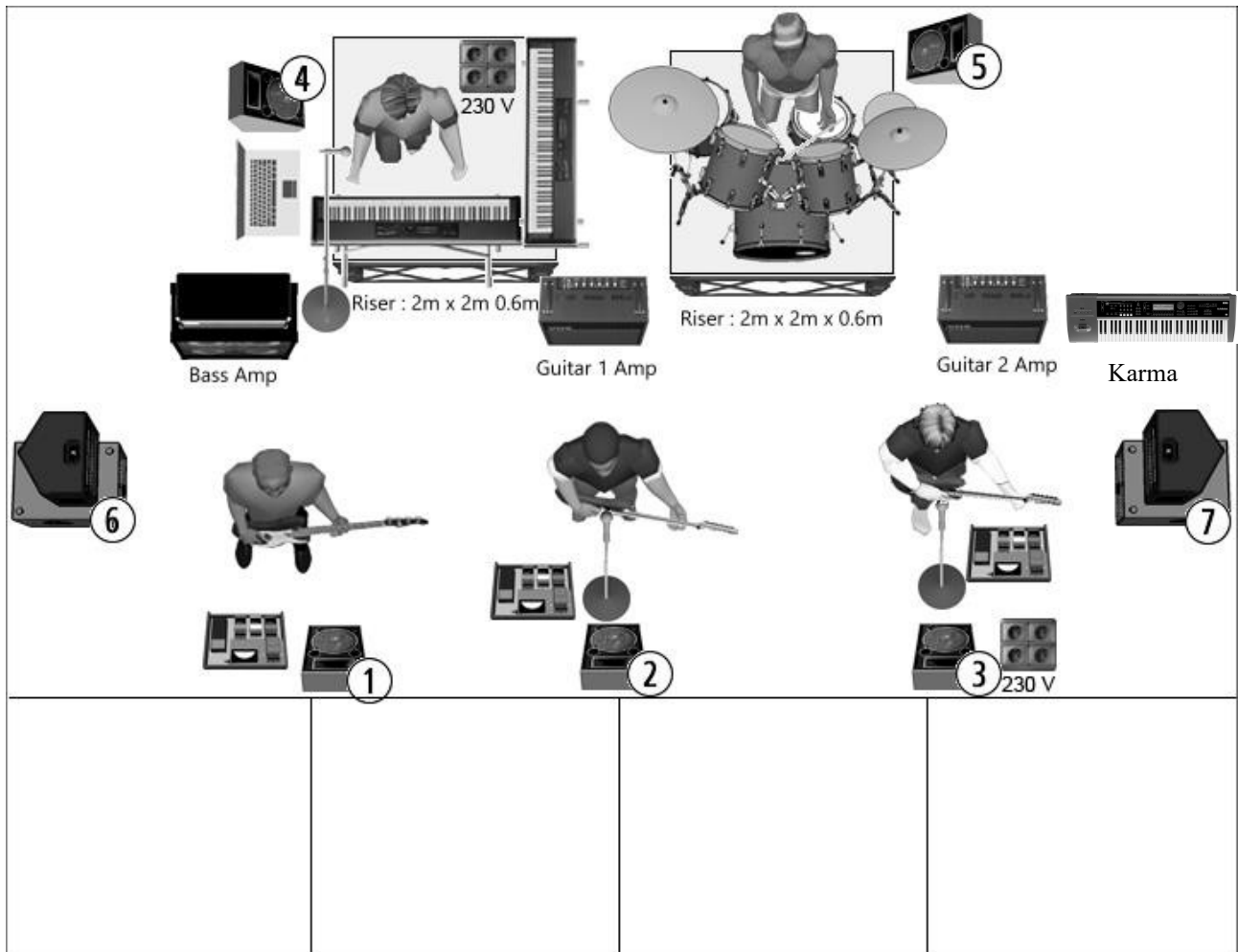
One Lightning Engineer. Please note thta we are travelling without Lightning engineer

One Backliner.

Patch Input	Instrument	Mics	Boom
1	Kick Drum	Beta 52	
2	Kick Drum	Beta 91	
3	Snare Drum	Sm 57	Small Boom
4	Hi hat	Sm 81	Small Boom
5	Tom 1	e904	
6	Tom 2	e904	
7	Floor Tom	e904	
8	OH Left	Sm 81	Tall Boom
9	OH Right	Sm 81	Tall Boom
10	Bass DI	AR 133/J48	
11	Bass Mic	M88	Small Boom
12	Guitar Left	e906	Small Boom
13	Guitar Right	e906	Small Boom
14	Key1 Left	AR 133/J48	Sound Card out 3
15	Key1 Right	AR 133/J48	Sound Card out 4
16	Key2 Left	AR 133/J48	Sound Card out 5
17	Key2 Right	AR 133/J48	Sound Card out 6
18	Karma Mono	AR 133/J48	Stage Right
19	SPD-S Mono	AR 133/J48	Drum Riser
20	Playback Left	AR 133/J48	Sound Card out 1
21	Playback Right	AR 133/J48	Sound Card out 2
22	Lead Vocal	Beta 58	Tall Boom
23	Backing Vocal 1	SM 58	Tall Boom
24	Backing Vocal 2	SM 58	Tall Boom
25	Click Track		Sound Card out 7

Output Patch	Wedge
Aux 1	Bass Monitor
Aux 2	Lead Vocal/Guitar 1 Monitor Center Stage
Aux 3	Guitar 2 Monitor Right Stage
Aux 4	Keyboard Monitor
Aux 5	Drum Monitor
Aux 6	Side Fill Left Stage (If Available)
Aux 7	Side Fill Right Stage (If Available)
Aux 8	Lead Vocal IEM

Stage Plot



FOR ANY QUESTIONS OR TECHNICAL INQUIRIES :
pressgangmetropol@gmail.com